

RT32 (A459)

PARTS CATALOG

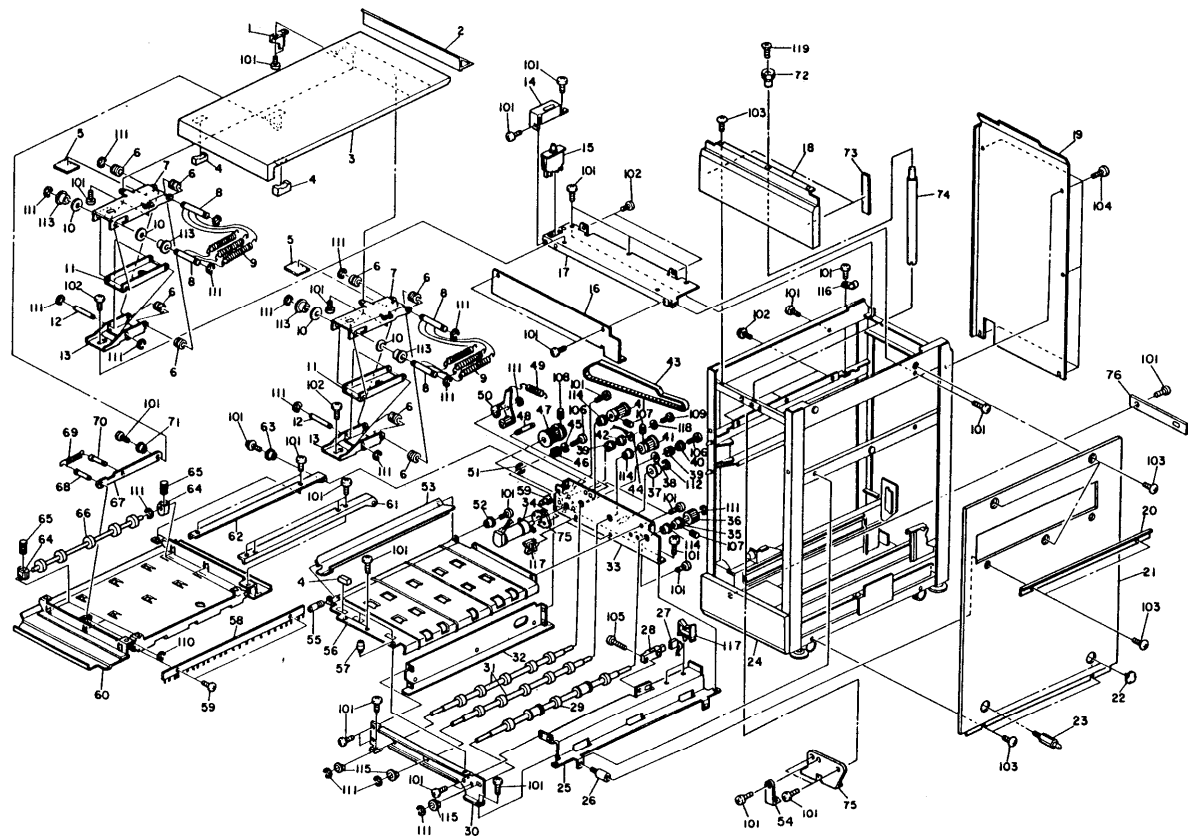
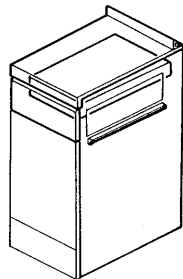
INTRODUCTION

This chapter instructs you the numbers and names of this parts on this machine.

INDEX to PARTS CATALOG

Location of Unit	3
1. LCT Exterior and Upper Transport Section (A459)	4
2. LCT Frame and Electrical Section (A459)	6
3. LCT Tray (A459)	8
4. LCT Paper Feed Unit (A459)	10
5. Drive Section (A459)	12
6. Horizontal Transport Unit (A459)	14
7. LCT Control Board (A459)	16
8. Relay Harness (A459)	20
9. Decal and Document (A459)	22
10. Accessories (A459)	24
Parts Index	27

1. LCT EXTERIOR AND UPPER TRANSPORT SECTION (A459)



1. LCT EXTERIOR AND UPPER TRANSPORT SECTION (A459)

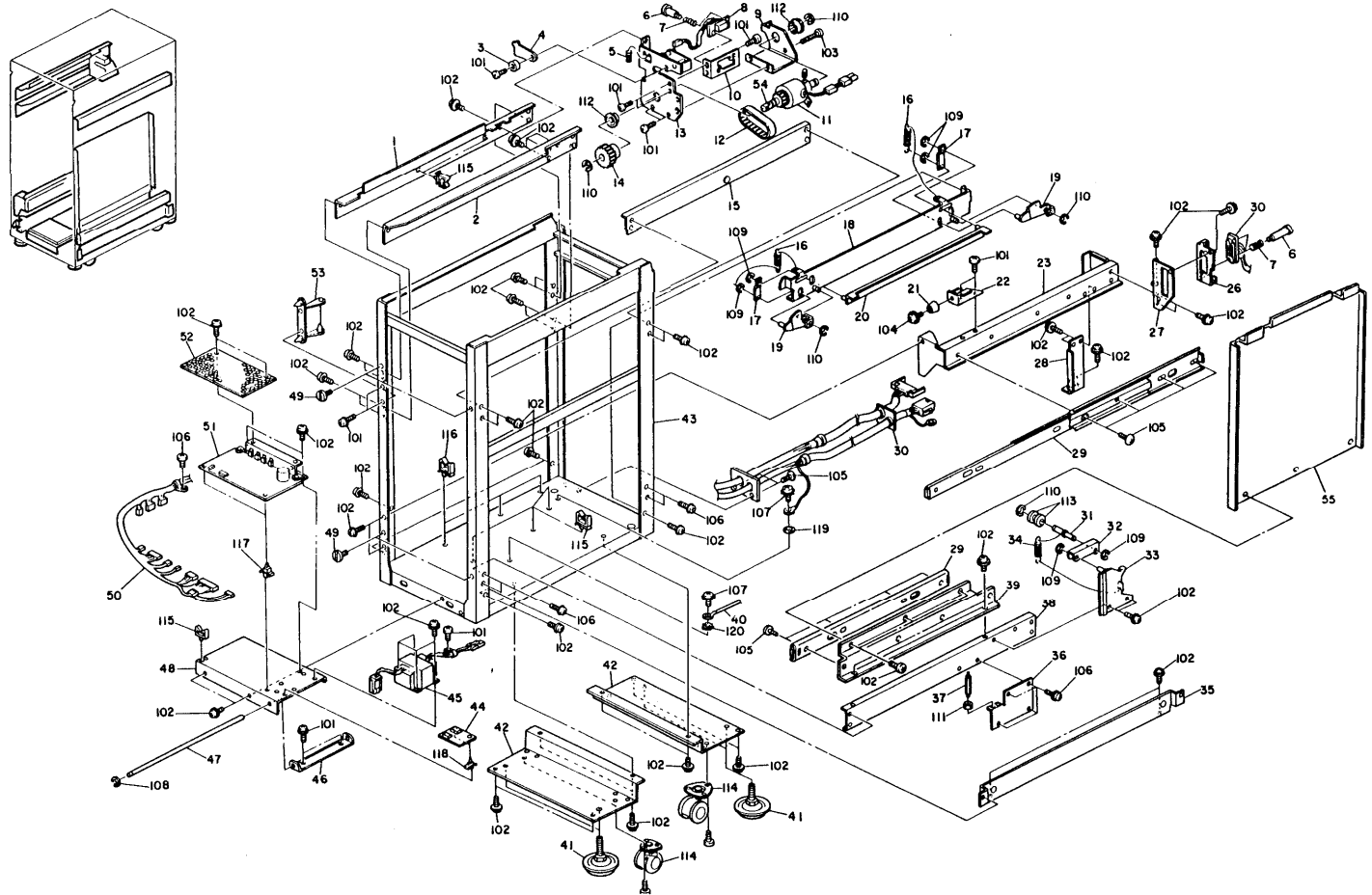
Index No.	Part No.	Description	Q'ty Per Assembly
1	A459 1322	Safety Switch Actuator	1
2	A459 2925	Cover Stopper	1
3	A459 1206	Upper Cover → A459 1208	1
4	A420 3699	Magnet Catch Ass'y	5
5	A458 1325	Shock Absorber	2
6	AA08 0021	Bushing - 6x12x4mm	8
7	A459 1316	Slider Hinge	2
8	A458 1314	Slide Shaft	4
9	A458 1317	Spring	6
10	A459 1318	Spacer	4
11	A458 1313	Hinge Link	2
12	A458 1316	Pressure Shaft	2
13	A458 1311	Hinge	2
14	A459 1321	Safety Switch Cover	1
15	A459 1290	Front Cover Guide	1
16	A459 1320	Hinge Bracket Cover → A459 1323	1
17	A459 1310	Hinge Bracket → A459 1313	1
18	A459 1258	Front Upper Cover	1
19	A459 1286	Rear Cover	1
20	A459 1331	Sub-Tray Auxiliary Plate	1
21	A459 1276	Right Cover	1
22	A029 1413	Cap	2
23	A461 1211	Entrance Guide Plate	2
24	A459 1268	Front Lower Cover	1
25	A459 1521	Transport Right Stay	1
26	A459 1340	Stepped Screw - M4	2
27	A4595350	Jam Sensor Harness	1
28	A459 5410	Photo Sensor - PS PC05	1
29	A459 1545	Exit Roller	1
30	A459 1510	Front Side Plate - Transport	1
31	A459 1546	Transport Drive Roller	2
32	A459 1522	Transport Left Stay	1
33	A459 1515	Rear Side Plate - Transport → M13.5	1
34	AX05 0014	DC Motor - 24V → AX050079	1
35	A459 1557	Collar	1

Index No.	Part No.	Description	Q'ty Per Assembly
36	A459 1555	Pulley - 22Z	1
37	A458 3281	Idler Roller	1
38	59362320	Rubber Ring - Vibration Damper	1
39	59362321	Rubber Bushing - Vibration Damper	1
40	59362319	Collar - Vibration Damper	1
41	A459 1551	Pulley - 24Z → M13.5	2
42	A459 1563	Shock Absorber	1
43	A459 1558	Timing Belt - 710 P2M6	1
44	68025703	Grounding Wire	1
45	A459 1560	Motor Collar	1
46	A459 1561	Shock Absorber	1
47	A459 1550	Pulley - 30Z/37Z	1
48	54031910	Spring Anchor - Stopper Lever	1
49	58943175	Spring - Drive Motor Tension	1
50	59182321	Timing Belt Tightener	1
51	A459 1562	Shock Proof Sheet	1
52	54032048	Bushing - 4mm	1
53	A459 1540	Entrance Guide	1
54	A459 1293	Leaf Spring	1
55	54101291	Return Lever Pin	1
56	A459 1525	Transport Lower Guide	1
57	A459 1566	Stepped Screw - M	1
58	A459 1570	Antistatic Brush	1
59	58752088	Shoulder Screw - M4	2
60	A459 1530	Transport Upper Guide	1
61	A459 1537	Left Mounting Plate - Transport	1
62	A459 1536	Right Mounting Plate - Transport	1
63	A459 1565	Mounting Plate Collar	1
64	58874155	Shaft Guide - Turn Driven	6
65	58874156	Spring - Driven Roller	6
66	A459 1547	Upper Roller	3
67	A459 1567	Hinge Lever	1
68	58942229	Solenoid Pin	1
69	58943175	Spring - Drive Motor Tension	1
70	54032049	Spring Anchor	1

Index No.	Part No.	Description	Qty Per Assembly
71	54032048	Bushing - 4mm	1
72	A459 1292	Front Cover Knob	1
73	A459 1294	Front Cover Support Plate	2
74	A459 1291	Front Cover Shaft	1
A4591528 75	A459 1559	Transfer Drive Motor Bracket SCHEIDT	1
76	A459 1270	Blind Cover	1

Index No.	Part No.	Description	Qty Per Assembly
101	0314 0060W	Philips Pan Head Screw - M4x6	
102	0951 4006W	Philips Screw With Flat Washer - M4	
103	0344 0060F	Philips Truss Head Screw - M4x6	
104	0344 0060Z	Philips Truss Head Screw - M4x6	
105	0313 0100W	Philips Pan Head Screw - M3x10	
106	0323 0080W	Philips Sunken Head Screw - M3x8	
107	0574 0050E	Hexagon Headless Set Screw - M4x5	
108	0575 0060E	Hexagon Headless Set Screw - M5x6	
109	0313 0100M	Philips Pan Head Screw - M3x10	
110	0720 0025E	Retaining Ring - M2.5	
111	0720 0040E	Retaining Ring - M4	
112	0720 0060E	Retaining Ring - M6	
113	08053208	Ball Bearing - 6x10x3mm	
114	08053145	Ball Bearing - 6x12x4mm	
115	08053042	Ball Bearing - 6x10x3mm	
116	11050009	Nylon Clip - 5N	
117	11050196	Harness Clamp	
118	0701 0030G	Flat Washer - M3	
119	0353 0050E	Screw - M3x5	
120	12041609	Micro Switch	
121	0951 4008B	Philips Screw With Flat Washer - M4x8	
22	0314 0060B		

2. LCT FRAME AND ELECTRICAL SECTION (A459)



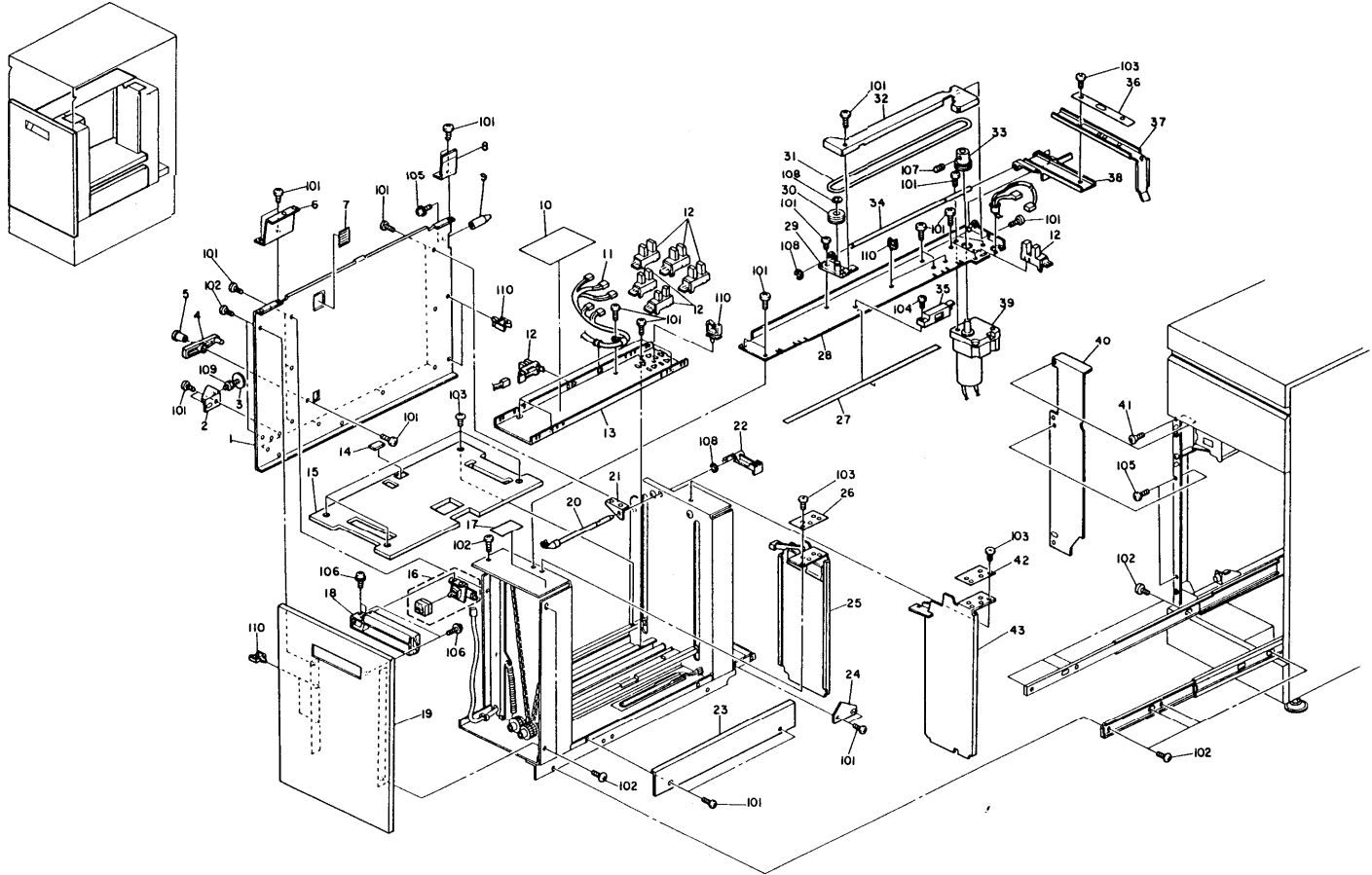
2. LCT FRAME AND ELECTRICAL SECTION (A459)

Index No.	Part No.	Description	Q'ty Per Assembly
1	A459 1142	Left Upper Support Plate	1
2	A459 1135	Right Middle Support Plate	1
3	A459 1565	Mounting Plate Collar	1
4	A459 1672	Pressure Plate	1
5	58874156	Spring - Driven Roller	1
6	54465832	Connector Guide Pin	4
7	54242625	Spring - Connector	4
8	A459 5340	Stepping Motor Harness → A4595341	1
9	A459 1671	Magnetic Clutch Support Plate	1
10	A459 1673	Connector Bracket	1
11	A459 1665	Magnetic Clutch	1
12	A459 1675	Timing Belt - 400P2M6	1
13	A459 1655	Magnetic Clutch Bracket	1
14	AB01 3229	Gear - 30Z	1
15	A459 1140	Right Upper Support Plate	1
16	58961179	Joint Spring	2
17	A458 1448	Joint Link	2
18	A459 1120	Joint Stopper Left Bracket	1
19	A459 1117	Joint Stopper	2
20	A459 1122	Unlock Plate	1
21	54462560	Cushion - Paper Tray	1
22	A459 2340	LCT Stopper Plate	1
23	A459 1130	Left Rail Bracket	1
26	A459 2511	Connector Bracket	1
27	A459 2510	Connector Bracket Holder	1
28	A459 1150	Rail Support Plate	1
29	59382763	Slide Guide	2
30	A459 5310	Relay Harness → A4595313	1
31	54462567	Detent Arm Shaft	1
32	54462566	Detent Arm	1
33	A459 2331	LCT Guide Roller Bracket	1
34	54462569	Spring - Detent	1
35	A4591110	Right Base Bracket	1
36	A459 1151	Rail Support Plate	1
37	A459 1152	Rail Adjuster	1

Index No.	Part No.	Description	Q'ty Per Assembly
38	A459 1125	Right Rail Support Bracket	1
39	A459 1126	Right Rail Bracket	1
40	58865670	Grounding Wire	1
41	AH01 1001	Stand	4
42	A459 1090	Caster Bracket	2
43	A459 1061	LCT Frame → A4591062	1
44	A459 5220	LCT Sub Control Board	1
45	AZ03 0001	Transformer - 125.8VA	1
46	A459 2521	Control Board Bracket Holder	1
47	A459 2522	Bracket Guide Rod	1
48	A459 2520	Control Board Bracket	1
49	54083320	Stepped Screw - Repeater	2
50	A459 5330	Transport Motor Harness	1
51	A4595110	LCT Control Board → A4595130	1
52	A459 2523	Power Pack Cover → A4595100 → 5120	1
53	A459 1610	LCT Unit Lock Plate	1
54	A459 1670	Magnetic Clutch Support Plate	1
55	A459 1127	Inside Cover	1
	56	A4591090 Harness Bracket	1



3. LCT TRAY (A459)

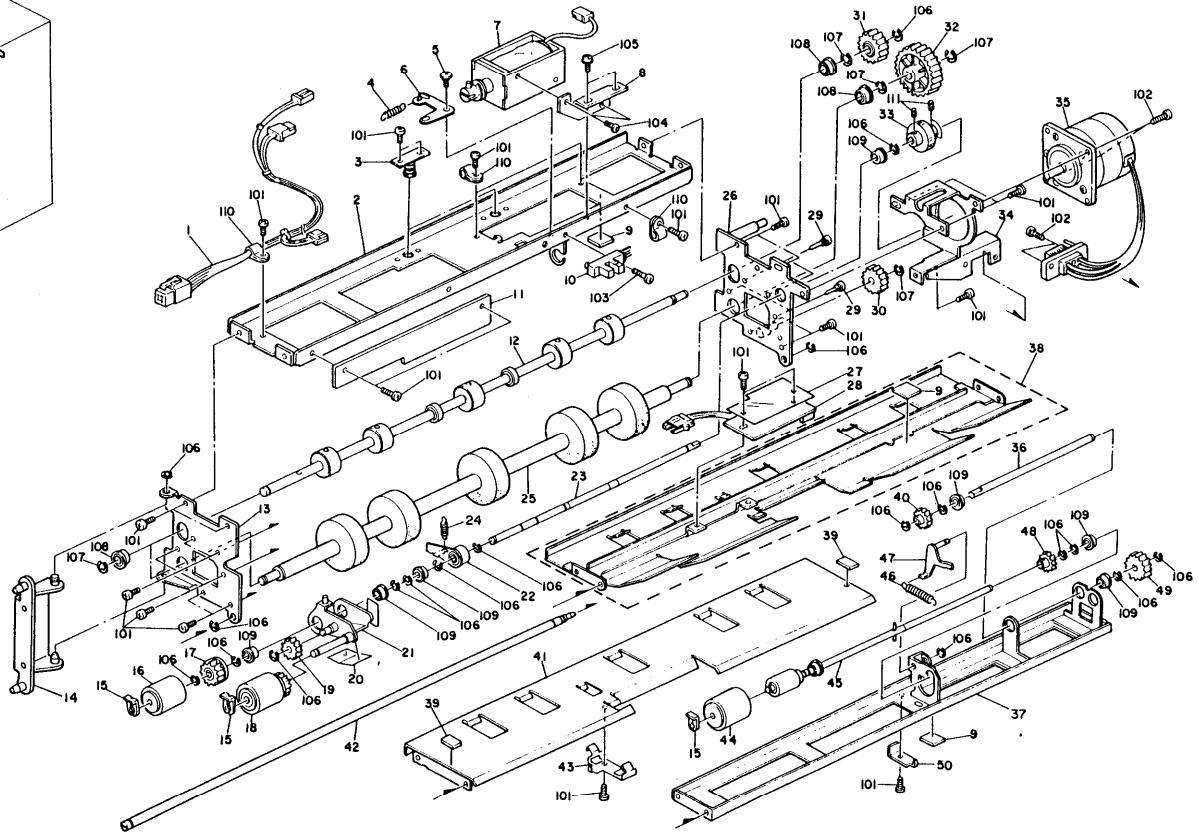
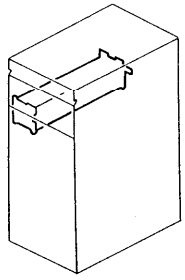


3. LCT TRAY (A459)

Index No.	Part No.	Description	Q'ty Per Assembly
1	A459 2030	Right Side Fence	1
2	A459 2345	LCT Stopper Bracket	1
3	A459 2346	LCT Stopper	1
4	54152642	Lock Arm	1
5	A459 2341	Stopper Pin	1
6	A459 2326	Left Upper Support Cover	1
7	54462638	Decal - Paper Lower Limit	1
8	A459 2327	Rear Support Cover	1
9	A459 2321	LCT Guide Pin	1
10	A459 2611	Decal - Sensor Size	1
11	A459 5300	LCT Middle Harness	1
12	52165245	Photointerruptor - IL-G-3P-S3T2-E	7
13	A459 2280	Paper Size Sensor Plate	1
14	52012858	Friction Pad	1
15	A459 2080	LCT Tray	1
16	A459 5400	LCT Operation Board	1
17	A459 2615	Decal - Adding Paper	1
18	A459 1236	LCT Grip	1
19	A459 1221	Front Cover	1
20	A459 2310	Paper End Feeler	1
21	A459 2312	Paper End Feeler Bracket	1
22	A008 2626	Paper End Actuator	1
23	A459 2325	Right Lower Cover	1
24	A459 2335	LCT Guide Plate	1
25	A459 2250	Front Side Fence	1
26	A459 2607	Decal - Front Side Fence	1
27	A459 2605	Decal - Fence	1
28	A459 2210	Paper Size Sensor Plate	1
29	A459 2221	Guide Shaft Bracket	1
30	A459 2222	Pulley - Back Fence Sensor	1
31	A459 2230	Drive Belt - Back Fence Sensor	1
32	A459 2235	Sensor Cover	1
33	A459 2225	Drive Pulley - Back Fence Sensor	1
34	A459 2220	Actuator Guide Shaft	1
35	A459 5410	Photo Sensor -PS PC05	1

Index No.	Part No.	Description	Q'ty Per Assembly
36	A459 2606	Decal - Back Fence	1
37	A459 2216	Back Fence Sensor Plate	1
38	A459 2214	Back Fence Sensor Actuator	1
39	A423 5410	DC Motor - 24V2.9W	1
40	A459 1325	Front Sub Cover	1
41	58752088	Shoulder Screw - M4	1
42	A459 2608	Decal - Rear Side Fence	1
42	A459 2610	Decal - Side Fence - LT	1
43	A459 2255	Rear Side Fence - A4	1
43	A459 2256	Rear Side Fence - LT	1
101	0314 0060W	Philips Pan Head Screw - M4x6	
102	03440060Z	Philips Truss Head Screw - M4x6	
103	0344 0060F	Philips Truss Head Screw - M4x6	
104	03130100W	Philips Pan Head Screw - M3x10	
105	0951 4006W	Philips Screw With Flat Washer - M4	
106	09514008W	Philips Screw with Flat Washer - M4	
107	0574 0050E	Hexagon Headless Set Screw - M4x5	
108	0720 0030E	Retaining Ring - M3	
109	0710 0050B	Hexagon Nut - M5	
110	11050199	Clamp	

4. LCT PAPER FEED UNIT (A459)

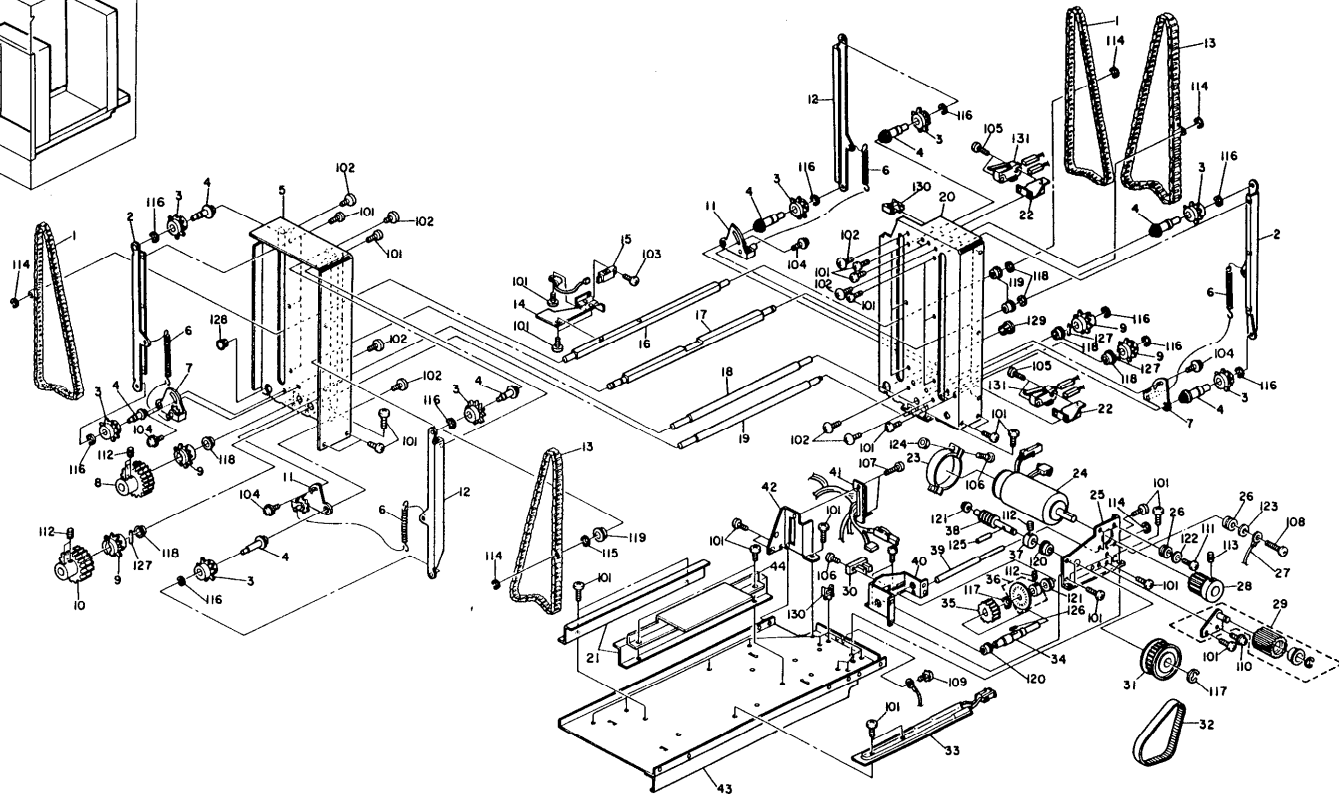
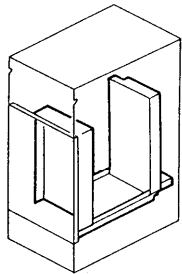


4. LCT PAPER FEED UNIT (A459)

Index No.	Part No.	Description	Q'ty Per Assembly
1	A028 5412	Paper Feed Harness	1
2	A028 3151	Paper Feed Stay	1
3	A0283165	Grip Supporter	1
4	AA060137	Spring	1
5	54472768	Stepped Screw - M3	1
6	A0283174	Pick-up Lever	1
7	A0283173	Paper Feed Solenoid	1
8	A0283172	Solenoid Bracket	1
9	A028 3264	Stopper Cushion	3
10	52055250	LED Sensor Type S	1
11	A459 1635	Feed Stay	1
12	A028 3131	Upper Grip Roller	1
13	A028 3122	Paper Feed Front Side Plate	1
14	A459 1610	LCT Unit Lock Plate	1
15	52062686	Snap Ring	2
16	54472726	Paper Feed Roller	1
17	52052594	Gear - 18T	1
18	54472723	Pick-up Roller	1
19	54472706	Gear - 15T	1
20	A028 3160	Pick-up Guide	1
21	A028 3157	Pick-up Arm	1
22	A028 3161	Paper Feed Stopper	1
23	AA14 0148	Feed Roller Shaft	1
24	AA06 6204	Spring	1
25	AF02 0071	Grip Roller	1
26	A459 1620	Rear Side Plate	1
27	A028 3148	Paper Feed Control Board Cover	1
28	A028 5160	Registration Sensor Board	1
29	54462824	Screw - Duplex Guide Plate	4
30	AB01 3222	Gear - 20Z	1
31	AB01 3220	Gear - 20Z	1
32	AB01 3230	Gear - 40Z	1
33	A028 3008	Drive Motor Joint	1
34	A028 3176	Paper Feed Motor Bracket	1
35	A028 5322	Paper Feed Motor	1

Index No.	Part No.	Description	Q'ty Per Assembly
36	AA14 0149	Separation Shaft	1
37	A028 3103	Paper Separation Stay	1
38	A459 1606	Upper Feed Guide	1
39	A028 3146	Paper Feed Guide Spacer	2
40	54472683	Gear - 18T	1
41	A459 1625	Lower Feed Guide	1
42	AA14 0146	Paper Feed Guide Shaft	1
43	A0283142	Feed Sensor Guide	1
44	AF03 2001	Separation Roller	1
45	A0283110	Torque Limiter Roller	1
46	AA060138	Spring	1
47	A0283120	Separation Roller Arm	1
48	54472684	Gear - 18T	1
49	AB01 3231	Gear - 21Z	1
50	A028 3125	Pressure Arm Stopper	1
101	0314 0060W	Philips Pan Head Screw - M4x6	
102	0314 0080W	Philips Pan Head Screw - M4x8	
103	0314 0100W	Philips Pan Head Screw - M4x10	
104	0313 0060W	Philips Pan Head Screw - M3x6	
105	0951 4006B	Philips Screw with Flat Washer - M4	
106	0720 0040E	Retaining Ring - M4	
107	0720 0060E	Retaining Ring - M6	
108	08053307	Ball Bearing - 8x14x4mm	
109	08053307	Ball Bearing - 8x14x4mm	
110	11050005	Nylon Clip - 3N	
111	0573 0050E	Hexagon Headless Set Screw - M3x5	

5. DRIVE SECTION (A459)



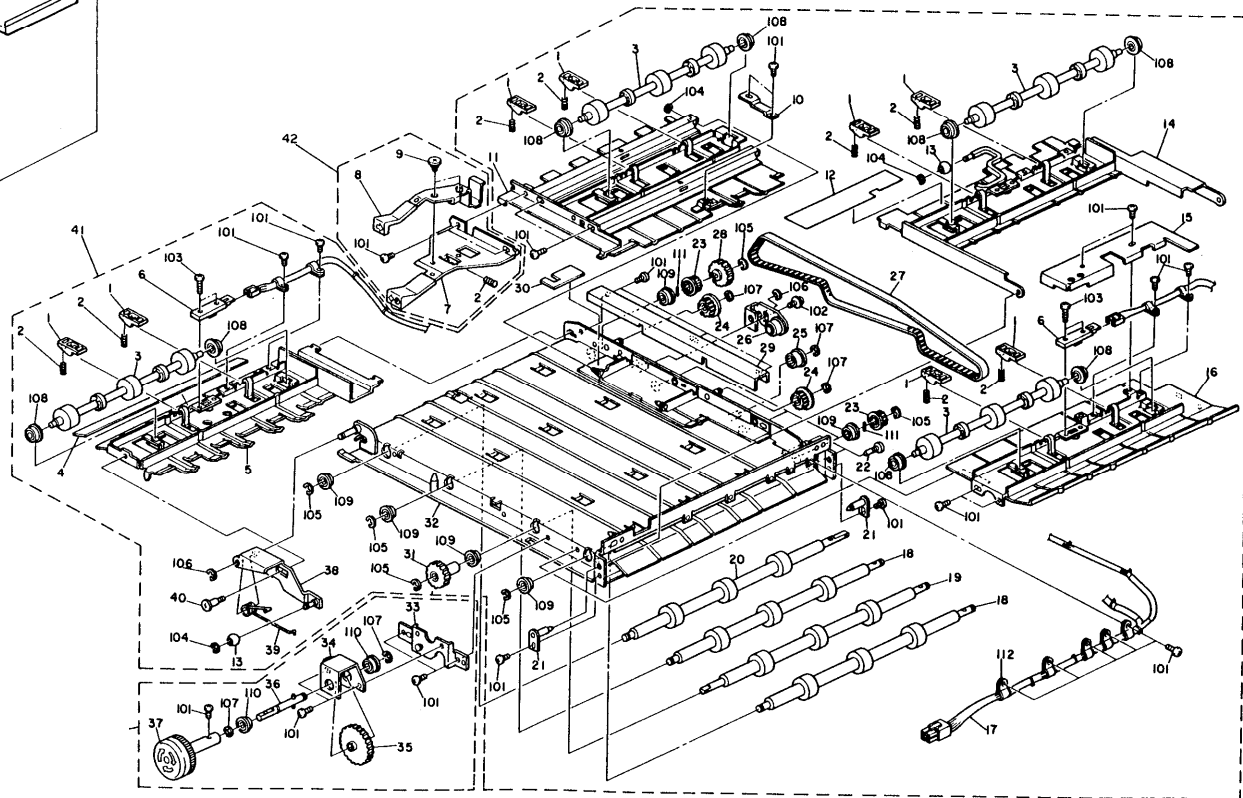
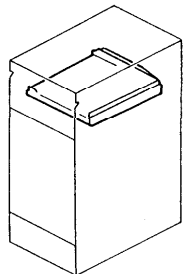
5. DRIVE SECTION (A459)

Index No.	Part No.	Description	Q'ty Per Assembly
1	A459 2090	Left Chain	2
2	A459 2071	Left Support Plate - Sprocket	2
3	A459 2057	Sprocket - 13Z	8
4	A459 2056	Sprocket Shaft	8
5	A459 2020	Side Plate - Right - Tray Exit	1
6	A459 2095	Tightener Spring	4
7	A459 2065	Left Tightener	2
8	A459 2053	Gear - 27Z	1
9	A459 2055	Sprocket - 14Z	4
10	A459 2052	Gear - 27Z	1
11	A459 2060	Right Tightener	2
12	A459 2070	Right Support Plate - Sprocket	2
13	A459 2089	Right Chain	2
14	A459 2087	Paper End Sensor Bracket	1
15	A459 5410	Photo Sensor - PS PC05	1
16	A459 2081	Front Tray Shaft	1
17	A459 2082	Rear Tray Shaft	1
18	A459 2051	Lift Driven Shaft	1
19	A459 2050	Lift Drive Shaft	1
20	A459 2025	Rear Side Fence	1
21	A459 2281	Base Support Plate	2
22	A459 2316	Paper End Switch Bracket	2
23	52195908	Stay - Main Motor	1
24	AX06 0015	DC Motor - V	1
25	A4592110	Lift Motor Bracket	1
26	A459 1014	Cushion - Motor	4
27	68025703	Grounding Wire	1
28	A459 2119	Pulley - 22Z	1
29	A459 2124	Pulley - 20Z	1
30	52055250	LED Sensor Type S	1
31	A4592118	Pulley - 50Z	1
32	A459 2135	Timing Belt - 26P3M10	1
33	54465463	Dehumidify Heater	1
34	A459 2117	Worm Wheel Shaft	1
35	A459 2116	Worm Wheel	1

A459 1014
MS#

Index No.	Part No.	Description	Q'ty Per Assembly
36	A459 2140	Pulse Generator	1
37	A459 2121	Worm Gear Collar	1
38	A459 2115	Worm Gear	1
39	A459 2120	Guide Shaft	1
40	A459 2111	Pulse Generator Bracket	1
41	A459 5300	LCT Middle Harness	1
42	A459 2512	Connector Bracket	1
43	A459 2010	LCT Base	1
44	A459 2290	Heater Cover	1

6. HORIZONTAL TRANSPORT UNIT (A459)



6. HORIZONTAL TRANSPORT UNIT (A459)

Index No.	Part No.	Description	Q'ty Per Assembly
1	A028 6222	Pressure Lever	8
2	AA06 3058	Spring	9
3	AF02 2026	Transport Driven Roller	4
4	A459 4195	Left Guide Plate Mylar	1
5	A459 4152	Left Guide Plate	1
6	AW01 0004	Photosensor	2
7	A4594171	Center Guide Knob	1
8	A459 4173	Guide Plate Lock Lever	1
9	54131882	Stepped Screw	2
10	A4594148	Stopper - Center Guide Plate	1
11	A459 4142	Center Guide Plate	1
12	A459 4149	Center Guide Mylar	1
13	AA134033	Roller	2
14	A459 4128	Right Middle Guide Plate	1
15	A459 4181	Harness Right Cover	1
16	A459 4122	Right Guide Plate	1
17	A459 5600	Horizontal Transport Harness	1
18	AF02 0095	Transport Roller	2
19	AF02 0097	Transport Drive Roller	1
20	AF02 0096	Transport Relay Roller	1
21	A459 4127	Guide Plate Pin - Right Middle	2
22	54462824	Screw - Duplex Guide Plate	2
23	AB03 0036	Pulley -182	4
24	AB03 0037	Idler -222	2
25	A459 4072	Idler - 18M	1
26	A459 4070	Tension Bracket	1
27	AA04 3028	Timing Belt - 852P3M6	1
28	AB01 3225	Gear -252	1
29	A4594182	Harness Rear Cover	1
30	A459 4193	Harness Guide Plate	1
31	AB01 3226	Gear -242	1
32	A459 4100	Paper Guide Plate - Horizontal	1
33	A459 4115	Gear Holder Bracket	1
34	A459 4161	Knob Bracket	1
35	AB01 3227	Gear - 44z	1



Index No.	Part No.	Description	Q'ty Per Assembly
36	A459 4162	Knob Shaft	1
37	AG05 0035	Knob - Fusing	1
38	A459 4156	Left Lever	1
39	AA06 6041	Spring	1
40	54221737	Shaft - Cassette Arm (R.FR)	1
41	A459 4050	Horizontal Transport Unit	1
42	A459 4170	Lock Lever Ass'y	1
43	A459 4160	Knob Ass'y	1
44	AA162025	Cushion - 7x9x2x2	1
101	0314 0060W	Philips Pan Head Screw - M4x6	
102	0951 4006B	Philips Screw with Flat Washer - M4	
103	0313 0120W	Philips Pan Head Screw - M3x12	
104	0720 0030E	Retaining Ring - M3	
105	0720 0040E	Retaining Ring - M4	
106	0720 0050E	Retaining Ring - M5	
107	0720 0060E	Retaining Ring - M6	
108	08053145	Ball Bearing - 6x12x4mm	
109	07413906	Bushing - M6	
110	08053307	Ball Bearing- 8x14x4mm	
111	0622 0100E	Spring Pin - 2x10mm	
112	11050005	Nylon Clip - 3N	

7. LCT CONTROL BOARD (A459)

CAPACITOR

SYMBOL NO.	INDEX NO.	SYMBOL NO.	INDEX NO.	SYMBOL NO.	INDEX NO.	SYMBOL NO.	INDEX NO.	SYMBOL NO.	INDEX NO.	SYMBOL NO.	INDEX NO.	SYMBOL NO.	INDEX NO.
C400	164	C410	160	C420	162	C430	165	C440	160	C451	164	C461	164
C401	159	C411	160	C421	160	C431	160	C441	156	C452	153	C462	156
C402	167	C412	160	C422	162	C432	164	C442	162	C453	166	C463	164
C403	164	C413	164	C423	164	C433	164	C443	162	C454	157	C464	156
C404	160	C414	160	C424	154	C434	164	C444	164	C455	158	C466	160
C405	164	C415	161	C425	164	C435	162	C445	164	C456	155		
C406	152	C416	152	C426	167	C436	164	C446	153	C457	151		
C407	166	C417	164	C427	160	C437	162	C447	164	C458	151		
C408	164	C418	152	C428	160	C438	162	C448	160	C459	164		
C409	160	C419	162	C429	164	C439	152	C449	165	C460	156		

CONNECTOR

SYMBOL NO.	INDEX NO.	SYMBOL NO.	INDEX NO.
CN400	103	D400	129
CN401	107	D401	129
CN402	102	D402	129
CN403	108	D403	129
CN404	106	D404	128
CN405	110	D405	121
CN406	111	D406	119
CN407	105	D407	126
CN408	109	D408	129
CN409	104	D409	126

FUSE

SYMBOL NO.	INDEX NO.	SYMBOL NO.	INDEX NO.
D410	126	FU400	113
D411	129	(FU400)	112
D412	129	FU401	114
D413	129	(FU401)	112

IC

SYMBOL NO.	INDEX NO.
IC400	140
IC401	141
IC402	137
IC403	2
IC404	135
IC405	142
IC406	139
IC407	143
IC408	138
IC409	141

SYMBOL NO.	INDEX NO.
IC410	135
IC411	136
IC412	144
IC413	118

LED

SYMBOL NO.	INDEX NO.
LED400	134
LED401	133
LED402	134
LED403	132
LED404	132

7. LCT CONTROL BOARD (A459)

NF

SYMBOL NO.	INDEX NO.
NF400	149
NF401	149

RERAY

SYMBOL NO.	INDEX NO.
RAY400	148
RAY401	148

RESISTOR

SYMBOL NO.	INDEX NO.	SYMBOL NO.	INDEX NO.	SYMBOL NO.	INDEX NO.	SYMBOL NO.	INDEX NO.	SYMBOL NO.	INDEX NO.
R400	168	R410	186	R420	168	R430	170	R440	178
R401	168	R411	186	R421	189	R431	176	R441	178
R402	168	R412	185	R422	183	R432	190	R442	195
R403	168	R413	179	R423	186	R433	169	R443	196
R404	169	R414	168	R424	186	R434	186	R444	172
R405	169	R415	168	R425	186	R435	185	R445	173
R406	186	R416	178	R426	186	R436	186	R446	186
R407	182	R417	168	R427	179	R437	179	R447	170
R408	179	R418	178	R428	179	R438	179	R448	170
R4(W)	169	R419	168	R429	147	R439	186	R449	168

SYMBOL NO.	INDEX NO.	SYMBOL NO.	INDEX NO.	SYMBOL NO.	INDEX NO.	SYMBOL NO.	INDEX NO.	EST POINT	SYMBOL NO.	INDEX NO.	SYMBOL NO.	INDEX NO.	
R450	186	R460	170	R470	176	R480	150	TP400	101	Q400	125	Q411	124
R451	179	R461	191	R471	187	R481	192	TP401	101	Q401	115		
R452	186	R462	182	R472	171	R482	182	TP402	101	Q402	115	Q412	124
R453	186	R463	194	R473	184	R483	179	TP403	101	Q403	115		
R454	186	R464	186	R474	186	R484	179	TP404	101	Q404	115		
R455	186	R465	174	R475	169	R485	186	TP405	101	Q405	116		
R456	169	R466	175	R476	180	R486	168	TP406	101	Q406	123		
R457	180	R467	145	R477	168			TP407	101	Q407	117		
R458	169	R468	181	R478	193					Q409	122		
R459	169	R469	188	R479	179					Q410	122		

7. LCT CONTROL BOARD (A459)

ZENER DIODE

SYMBOL	INDEX
NO.	NO.
ZD400	130
ZD401	130
ZD402	131
ZD403	131
ZD404	127
ZD405	120

7. LCT CONTROL BOARD (A459)

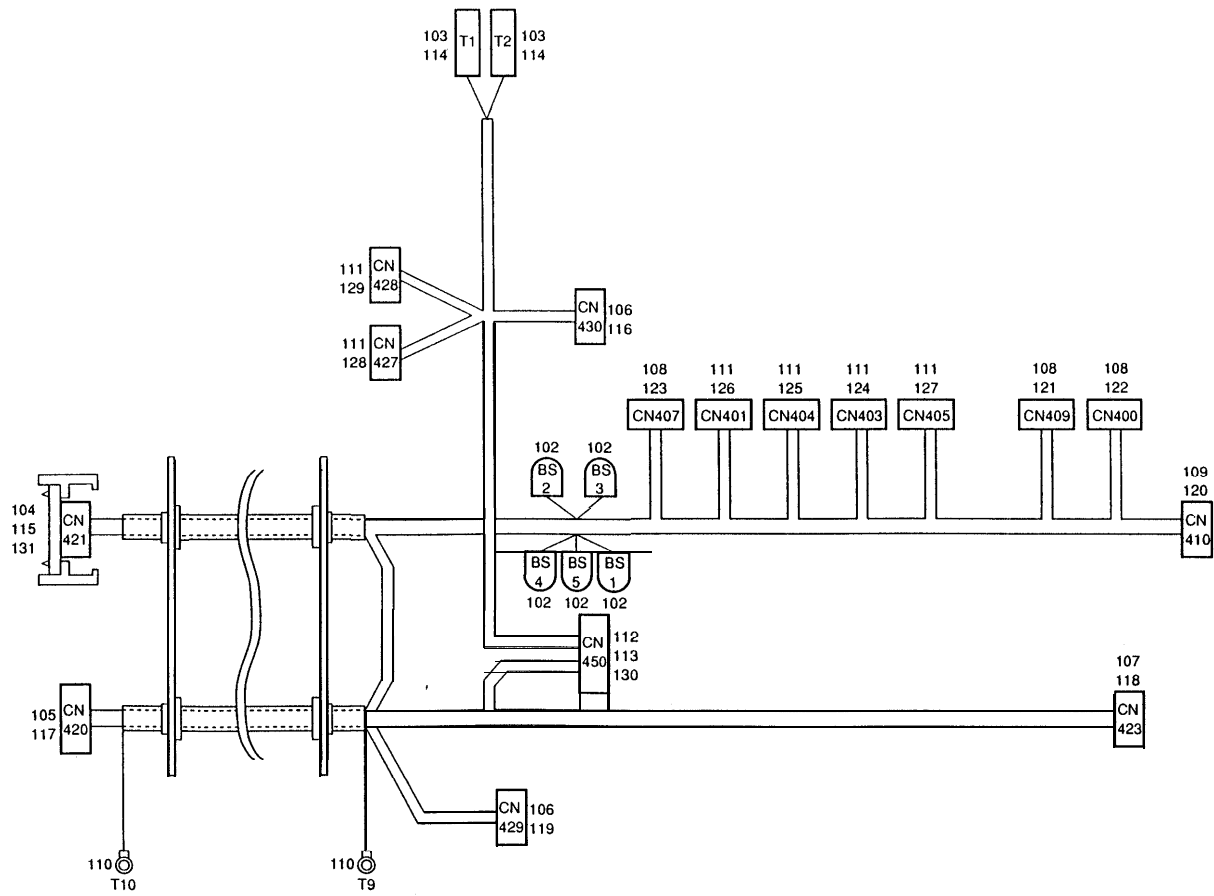
Index No.	Part No.	Description	Q'ty Per Assembly
1	A4595110	LCT Control Board (230V) → <i>5/20</i>	1
1	A4595100	LCT Control Board (115V) → <i>5/20</i>	1
2	A422 5350	IC - HCTL-3	1

Index No.	Part No.	Description	Q'ty Per Assembly
101	11010328	Connector Pin Contact	
102	11020995	Connector - 2P	
103	11031571	Connector - 6P	
104	11030395	Connector - 3P	
105	11030849	Terminal - 2P	
106	11031770	Connector - 4P	
107	11031771	Connector - 5P	
108	11031810	Pin Header - 2P (Brown)	
109	11031811	Connector - 3P	
110	11031815	Pin Header - 7P	
111	11031824	Pin Header - 2P (Red)	
112	11040351	Fuse Holder	
113	11070753	Fuse - 6.3A (EU)	
113	11070392	Fuse - 6.3A (USA)	
114	11070748	Fuse - 2A 250V (EU)	
114	11070411	Fuse - 125V 2A (USA)	
115	14000266	Transistor - 2SC1213A	
116	14000299	Transistor - 2SC2240	
117	14000363	Transistor	
118	14010325	Transistor Array - PU4320	
119	14010615	Diode - 1s1586 <i>14020559 0/0 MB7</i>	
120	14010694	Zener Diode - RD6.8FB	
121	14010800	Diode - M19C	
122	14010847	Transistor - 2SB1382	
123	14010848	Transistor - 2SB791K	
124	14010849	Transistor - 2SD2082	
125	14010850	Transistor - 2SD2083	
126	14020467	Diode - S5566G	
127	14020540	Diode - RD15F-B3	
128	14020799	Diode - RU3M	
129	14020863	Diode - RU4M	
130	14020864	Zener Diode	
131	14020865	Zener Diode	
132	14030416	LED - Led	
133	14030499	LED - Yellow	

Index No.	Part No.	Description	Qty Per Assembly
134	14030500	LED - Green	
135	14070568	IC - TC4069UBP	
136	14070614	IC - SN74LS74AN	
137	14071081	IC - HD7406P	
138	14071093	TTL - D74LS123P	
139	14072676	IC - TC4018BP	
140	14072842	IC - TC9192P	
141	14080099	IC - HA17901P	
142	14080170	IC - TA75902P	
143	14080233	IC - HA17903PS	
144	14080412	IC - 7705CP	
145	16000297	Resistor -0.5 Ω 5W $\pm 5\%$	
146	16000560	Resistor- 10 Ω $\pm 10\%$ 5W	
147	16001323	Resistor -0.4 Ω 5W $\pm 5\%$	
148	16017352	Resistor Array - 4.7k Ω	
149	16020953	Coil - 800 μ H 2.5A	
150	16022585	Resistor- 1.5k Ω , 1T +5%	
151	16040383	Capacitor - 100 μ F 63VV	
152	16041362	Capacitor - 4.7 μ F 25V	
153	16041363	Capacitor - 10 μ F $\pm 20\%$ 25V	
154	16041379	Capacitor - 2.2 μ F $\pm 20\%$ 50V	
155	16041385	Capacitor- 47 μ F $\pm 20\%$ 50V	
156	16041386	Capacitor- 100 μ F $\pm 20\%$ 50V	
157	16041387	Capacitor - 220 μ F 50V	
158	16042026	Capacitor - 4700 μ F 63V	
159	16061309	Capacitor - 33pF	
160	16061332	Capacitor- 1000pF 50V	
161	16061333	Capacitor-2200pF -20% + 80% 50V	
162	16061334	Capacitor - 4700pF 50V	
164	16061336	Capacitor- 10000pF -20% + 80% 50V	
165	16061396	Capacitor - 0.1 μ F 25V	
166	16061448	Capacitor - 0.1 μ F $\pm 10\%$ 63V <i>160620310/c/H07</i>	
167	16061715	Capacitor - 0.5 μ F 50V	
168	16114102	Resistor - 1K Ω 1/4T $\pm 5\%$	
169	16114103	Resistor - 10k Ω 1/4T*5%	

Index No.	Part No.	Description	Qty Per Assembly
170	16114104	Resistor - 100k Ω 1/4W $\pm 5\%$	
171	16114105	Resistor - 1M Ω 1/4T $\pm 5\%$	
172	16114153	Resistor- 15k Ω 1/4Tk5%	
173	16114154	Resistor- 150k Ω 1/4Tk5%	
174	16114202	Resistor - 2k Ω 1/4T $\pm 5\%$	
175	16114203	Resistor - 20k Ω 1/4T	
176	16114204	Resistor - 200k Ω 1/4W $\pm 5\%$	
178	16114221	Resistor - 220 Ω 1/4T $\pm 5\%$	
179	16114222	Resistor - 2.2Kk Ω 1/4T $\pm 5\%$	
180	16114223	Resistor - 22k Ω 1/4T $\pm 5\%$	
181	16114224	Resistor - 220k Ω 1/4T $\pm 5\%$	
182	16114301	Resistor - 300 Ω 1/4T	
183	16114304	Resistor - 300k Ω 1/4W $\pm 5\%$	
184	16114330	Resistor - 330 Ω 1/4T $\pm 5\%$	
185	16114392	Resistor- 3.9k Ω 1/4T*5%	
186	16114472	Resistor - 4.7K Ω 1/4w $\pm 5\%$	
187	16114473	Resistor - 47K Ω 1/4T $\pm 5\%$	
188	16114512	Resistor - 5.1k Ω 1/4T $\pm 5\%$	
189	16114514	Resistor - 510k Ω 1/4T $\pm 5\%$	
190	16114623	Resistor - 62k Ω 1/4T $\pm 5\%$	
191	16114683	Resistor - 68k Ω 1/4T +5%	
192	16116153	Resistor - 15K Ω 0.5W	
193	16116302	Resistor - 3K Ω 1/2W $\pm 5\%$	
194	16116512	Resistor -5.1 k Ω 1/2w $\pm 5\%$	
195	16221002	Resistor - 10k Ω 1/4T $\pm 1\%$	
196	16226491	Resistor - 6.49K Ω 1/4W $\pm 1\%$	

8. RELAY HARNESS (A459)



8. RELAY HARNESS (A459)

Index No.	Part No.	Description	Q'ty Per Assembly
*	A459 5310	Relay Harness → A4595313	1

Index No.	Part No.	Description	Q'ty Per Assembly
101	11050057	Cord Stopper -11 5V	
102	11000340	Connector -1 P	
103	11001169	Fastening Receptacle	
104	11001235	Pin - Mate-N-Lock	
105	11001239	Pin - Mate-N-Lock	
106	11001240	Socket - Mate-N-Lock	
107	11001241	Socket - Mate-N-Lock	
108	11001247	Terminal	
109	11001249	Receptacle Terminal	
110	11001264	Wire Terminal	
111	11001329	Contact	
112	11001342	Terminal	
113	11001345	Pin Contact	
114	11021408	Connector -1P	
115	11021502	Connector - 34P	
116	11021507	Connector - 2P	
117	11021513	Connector - 15P	
118	11021515	Connector - 2P	
119	11021518	Connector - 6P	
120	11021858	Connector - 6P	
121	11021878	Connector - 3P	
122	11021889	Connector - 6P	
123	11021896	Connector - 2P	
124	11021982	Socket Housing - 2P	
125	11021984	Connector - 4P	
126	11021985	Connector - 5P	
127	11021987	Connector 7P	
128	11021997	Connector - 3P	
129	11022002	Connector - P	
130	11022482	Connector - 32P	
131	11040510	Holder	
132	11050022	Cord Stopper -AWG 18/16 L	

9. DECALS AND DOCUMENTS (A459)

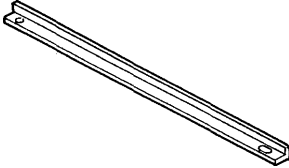

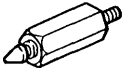



<p>1</p>	<p>2</p>	<p>3</p>	<p>4</p>	
	<p>5</p>	<p>6</p>	<p>7</p>	<p>8</p>

9. DECALS AND DOCUMENTS (A459)

dex No.	Part No.	Description	Q'ty Per Assembly
1	54462638	Decal - Paper Lower Limit	1
2	A459 2605	Decal - Fence	1
3	A459 2606	Decal - Back Fence	1
4	A459 2607	Decal - Front Side Fence	1
5	A459 2608	Decal - Rear Side Fence	1
6	A459 2610	Decal - Side Fence - LT	1
7	A459 2611	Decal - Sensor Size	1
8	A459 2615	Decal - Adding Paper	1

index No.	Part No.	Description	Q'ty Per Assembly

10.ACCESSORIES (A459)

1 	4 		
2 	3 	5 	6 

10. ACCESSORIES (A459)

Index No.	Part No.	Description	Q'ty Per Assembly
1	A459 1331	Sub-Tray Auxiliary Plate	1
2	A461 1211	Joint Stud	2
3	A459 1340	Stepped Screw - M4	4
4	A459 2920	Original Stopper	1
5	54461086	Leveling Foot Guide	4
6	11050316	Wire Saddle	2

Index No.	Part No.	Description	Q'ty Per Assembly